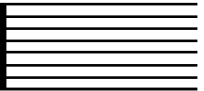


# RACE GRID



## 650cc & 700cc TWINS

### RACE 8 & RACE 18

ROW 4	12	11	10
ROW 3	9	8	<b>147</b> P. BLAKEY 7
ROW 2	<b>78</b> P. EVANS 6	<b>6</b> R. HUNT 5	<b>49</b> A. THANE 4
ROW 1	<b>36</b> F. HEGINSON 3	<b>4</b> J. HODSON 2	<b>88</b> D. CARSON 1

**POLE**

ANY NON QUALIFIED RIDERS WILL START FROM THE BACK OF THE GRID